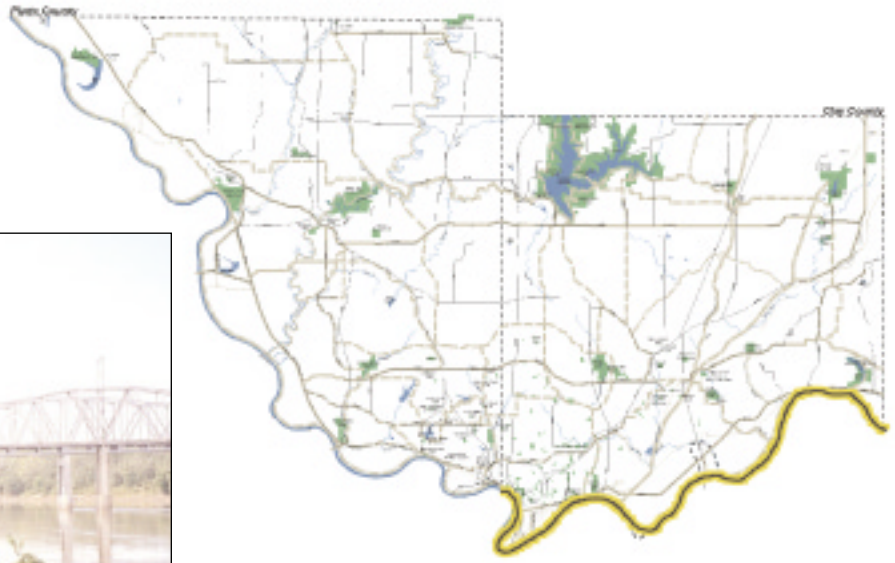


Clay County Levee Route



Construction Priority: Third

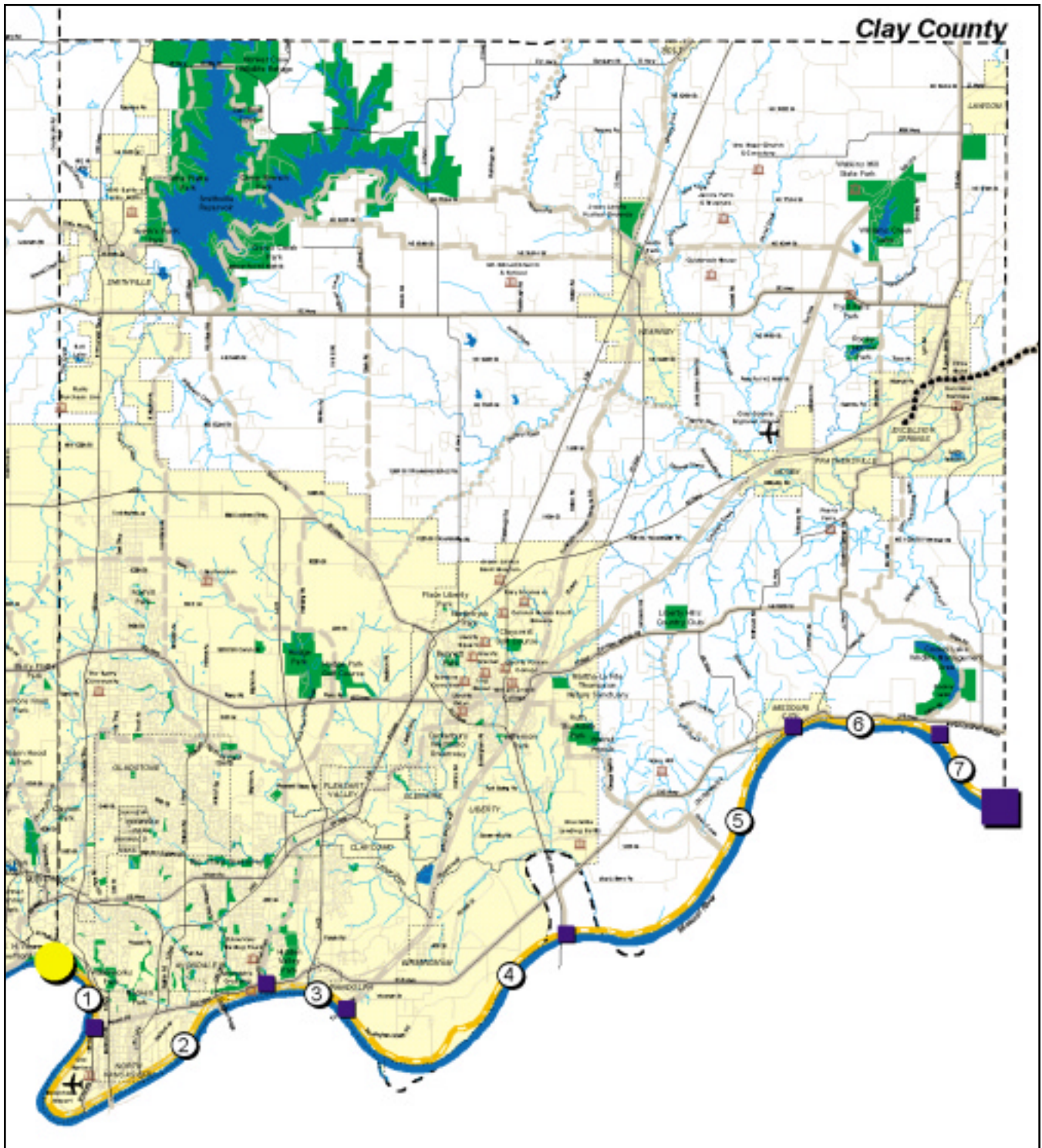
This 31.22-mile hard surface, off-road, shared use and off-road, soft surface equestrian trail is parallel to the Missouri River in its entirety as it originates at Riverside and runs to the Clay/Ray County Line. While this trails implementation will be challenging due to multiple property owners and levee protection issues,

reclaiming access to the Missouri River has been identified as a priority. Points of interest along the way in Clay County include Chouteau Trading Post, Randolph's Crossing and Cooley Lake.

TRAIL EVALUATION

	From	To	Distance	Uses	Trail Type	Trail Surface
Segment 1:	Clay/Platte County Line	North Kansas City	5.47	Shared Use/ Equestrian	4	Hard/Soft Surface
Segment 2:	North Kansas City	Searcy Creek Parkway	3.89	Shared Use/ Equestrian	4	Hard/Soft Surface
Segment 3:	Searcy Creek Parkway	Railroad	2.38	Shared Use/ Equestrian	4	Hard/Soft Surface
Segment 4:	Railroad	La Benite Park	6.19	Shared Use/ Equestrian	4	Hard/Soft Surface
Segment 5:	La Benite Park	Missouri City	8.21	Shared Use/ Equestrian	4	Hard/Soft Surface
Segment 6:	Missouri City	River Access	2.83	Shared Use/ Equestrian	4	Hard/Soft Surface
Segment 7:	River Access	Clay/Platte County Line	2.25	Shared Use/ Equestrian	4	Hard/Soft Surface
Total:			31.22			

Clay County Levee Route



NOTE: See route P6 for continuation into Platte County.